

Essa Springwater Attendance Area Review 2020:02

English regular track:

Baxter Central Public School
Portage View Public School

Secondary feeder schools:

Banting Memorial High School
Bear Creek Secondary School
Nottawasaga Pines Secondary School



Communication and feedback

Your voice is important as we work on adjusting boundaries at Baxter Central Public School and Portage View Public School and their respective secondary feeder schools. The board will be using an online communication tool, ThoughtExchange®, to share information and collect comments related to the attendance area review (AAR). You can provide feedback by answering one key question:

What feedback would you like to share regarding the new attendance area changes?

While you're there, you can rank the thoughts and ideas added from other parents/guardians. Your name is not collected, and no one will know who you are, or which ideas are yours.

You can participate from April 4 to 15, 2022. Continue to return to the ThoughtExchange® often during this time so that you can view and rank new thoughts and ideas from others as they are added.

After the closure of the ThoughtExchange®, the data collected will be evaluated and used to finetune the proposed attendance and program review areas. A report will be provided to the Simcoe County District School Board's (SCDSB) Business and Facilities Standing Committee in June 2022. Implementation of the boundaries will occur in September 2023.

Essa Springwater Attendance Area Review

The 2020-2021 Capital Plan recommended staff undertake an AAR (AAR 2020:02) in the southwest portion of Springwater Township and northeast portion of Essa Township.

This area requires review to address the regular track elementary and secondary boundaries. The rationale for the review is that:

- new boundaries will align the rural portions of Essa Township and Springwater Township to attend Baxter Central Public School
- Baxter Central Public School has available capacity
- families within this area have made out-of-attendance-area requests to attend Baxter Central Public School
- Portage View Public School is over capacity, and with further intensification in the City of Barrie, the school will continue to face enrolment pressures
- new boundaries will allow for the alignment of secondary feeder schools

Policy 2317 – School Attendance Areas sets out the guidelines for the establishment of school attendance areas.

Administrative Procedures Memorandum (APM) A7000 – School Attendance Areas is the procedure used to guide implementation of Policy 2317.

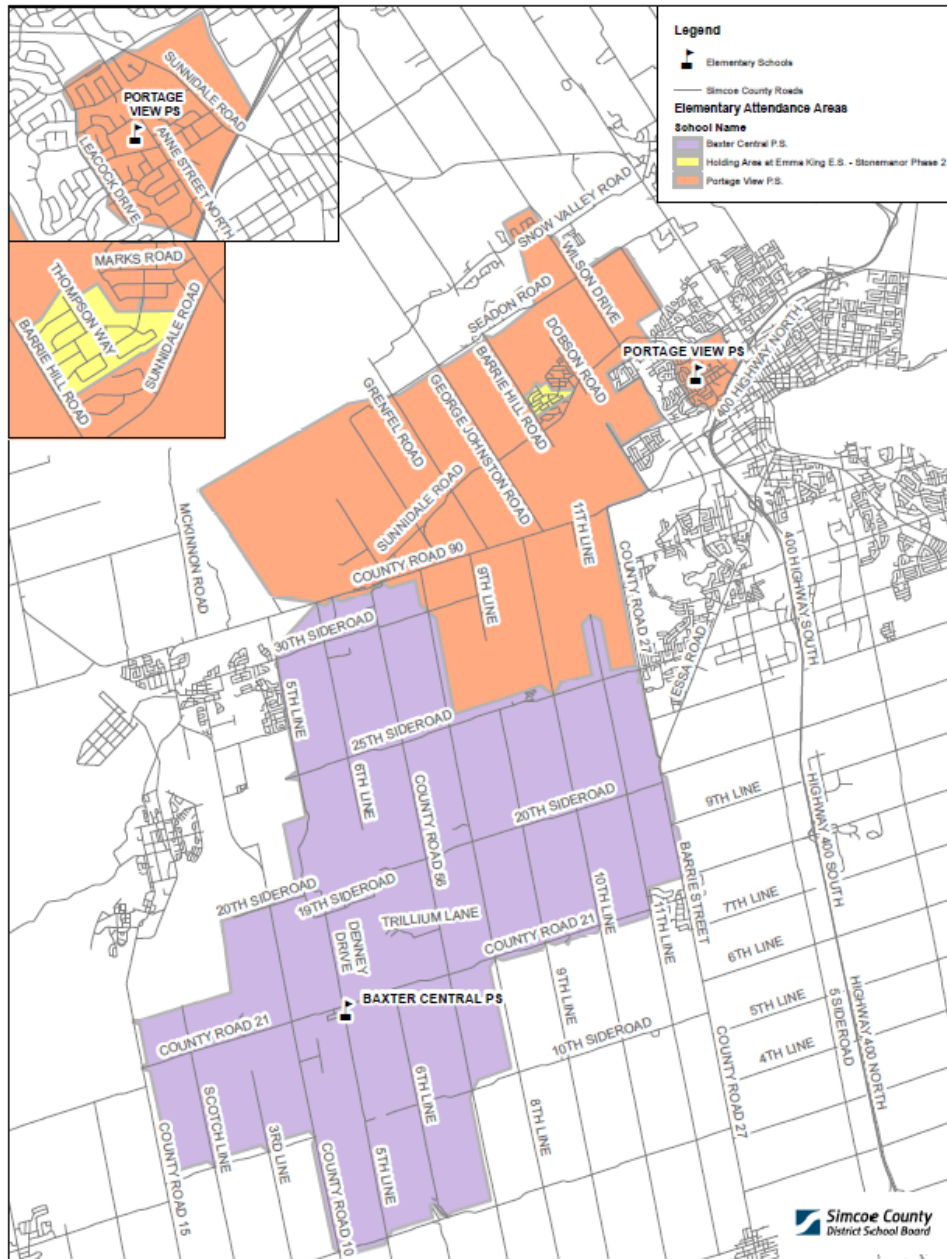
Current enrolment and other data

This chart represents the enrolment, utilization and portable count for the schools involved in the AAR as of September 2021:

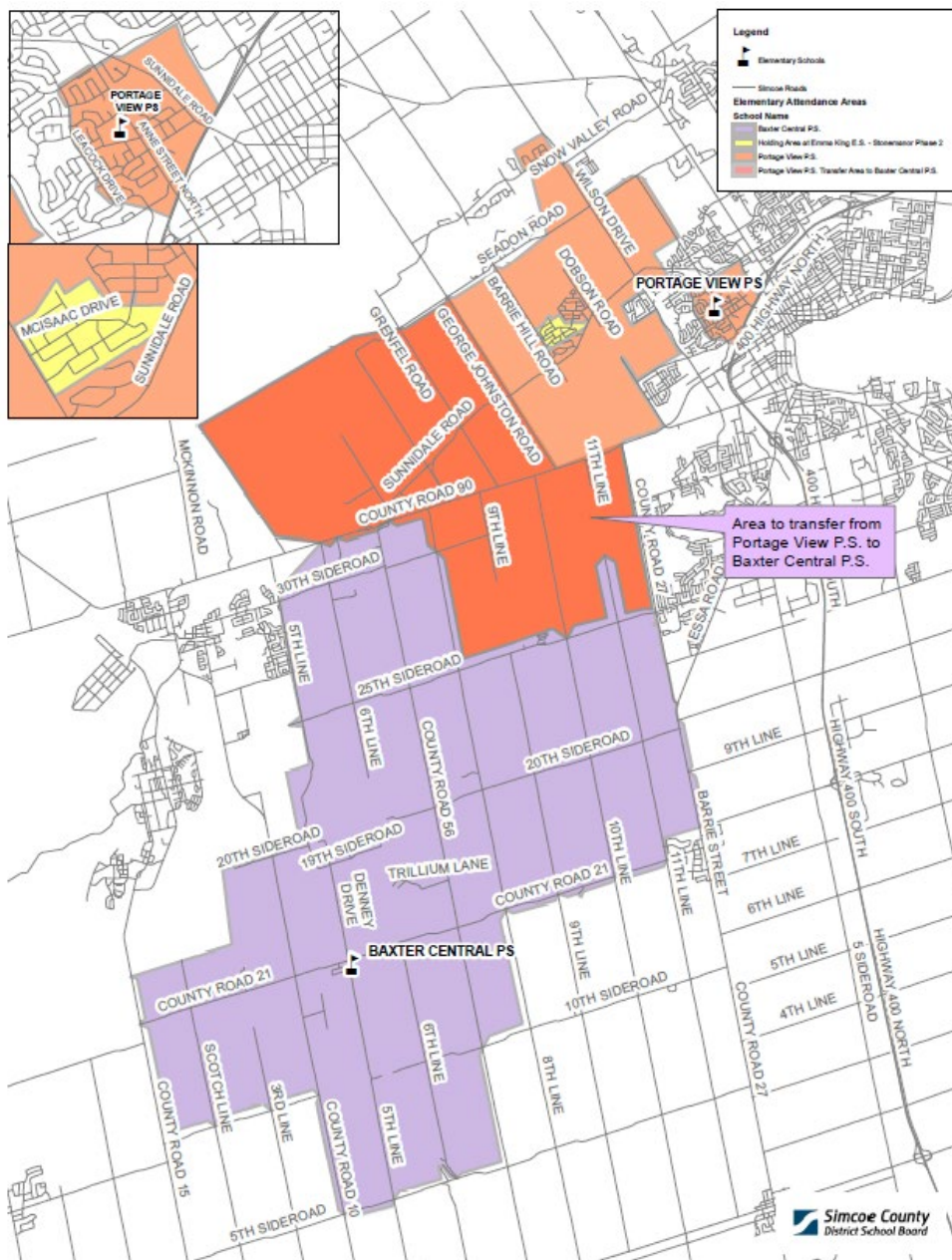
Elementary School	On The Ground Capacity	Portables 2021	Program	Students 2021	Utilization
Baxter Central PS	363	0	RT	304	84%
Portage View PS	522	3	JK-8 RT	442	85%
			FI	105	20%
			Sum	547	105%
Total	885	3		851	96%

Secondary School	On The Ground Capacity	Portables 2021	Students 2021	Utilization
Banting Memorial HS	1,491	0	1,533	103%
Bear Creek SS	1,407	7	1,535	109%
Nottawasaga Pines SS	906	0	713	79%
Total	3,804	7	3,781	99%

Current attendance areas



Areas under review (non-French Immersion)



Establishing new attendance boundaries

The purpose of the AAR is to align the rural area surrounding Baxter Central Public School with the secondary feeder schools. The attendance area also supports ensuring enrolment is balanced between the schools.

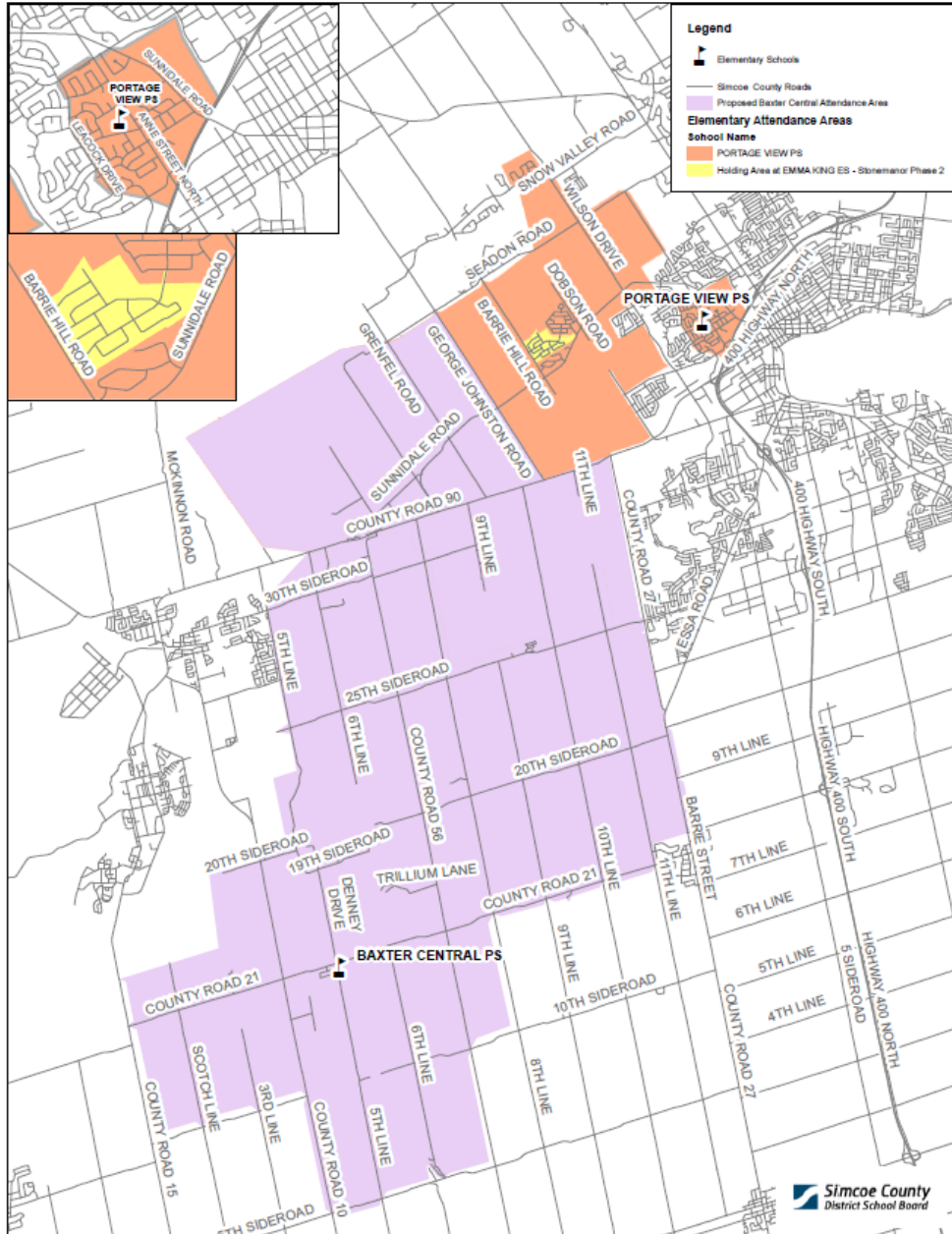
The proposed elementary boundaries would involve:

- transfer of approximately **33 students** from Portage View Elementary School to Baxter Central Public School

The following chart represents the projected elementary enrolment after the boundary change.

Elementary School	On The Ground Capacity	Portables 2021	Program	Projected Students 2023	Utilization
Baxter Central PS	363	0		366	101%
Portage View PS	522	3	JK-8 RT	451	86%
			FI	110	21%
			Sum	561	107%
Total	885	3		927	105%

Proposed elementary attendance areas



Areas under review (secondary alignment)

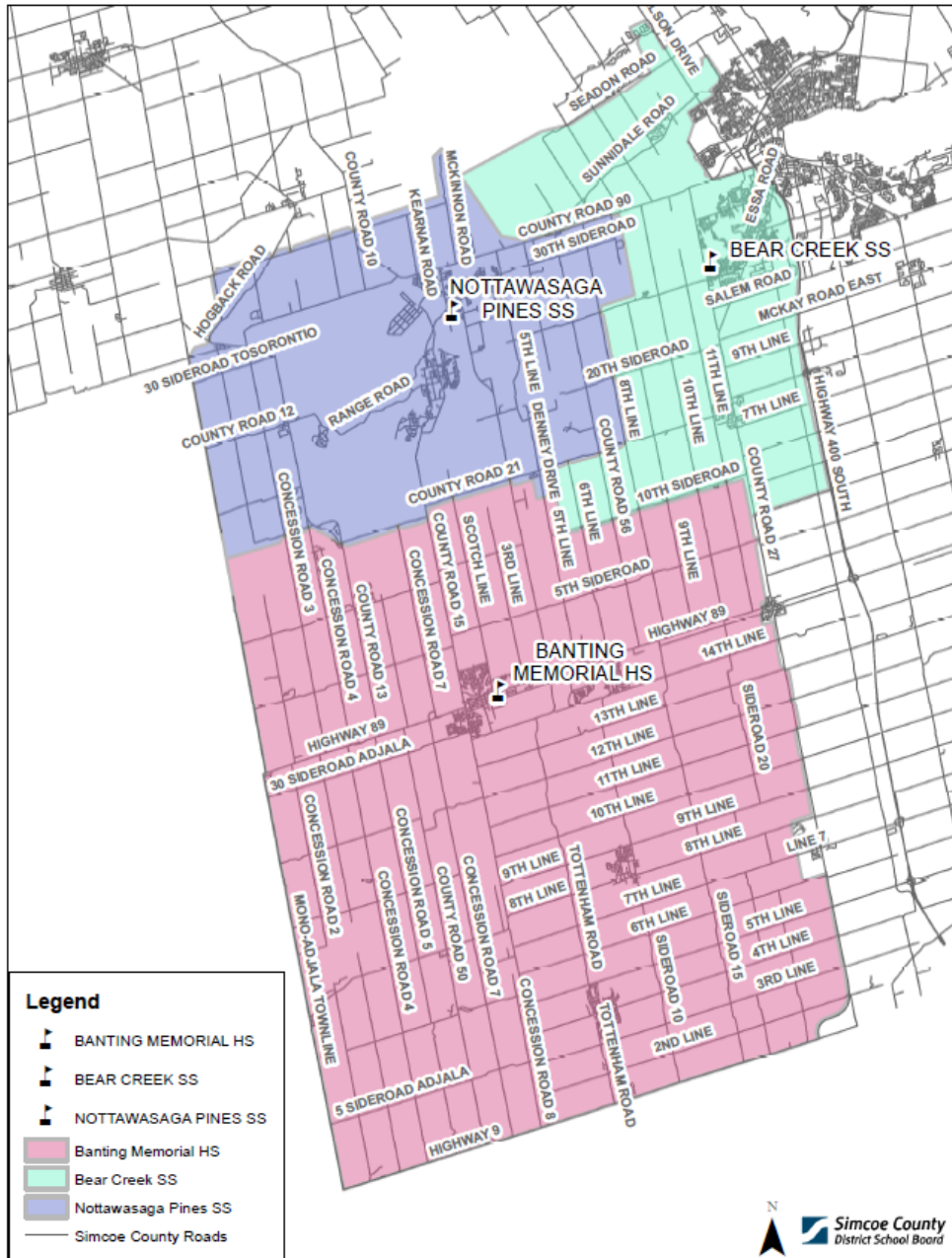
Baxter Central Public School feeds into three secondary schools: Banting Memorial High School, Bear Creek Secondary School and Nottawasaga Pines Secondary School. Most students attend Nottawasaga Pines Secondary School. The purpose of the review is for Baxter Central Public School to feed into one secondary school, which is proposed to be Nottawasaga Pines Secondary School.

The proposed secondary boundaries would involve:

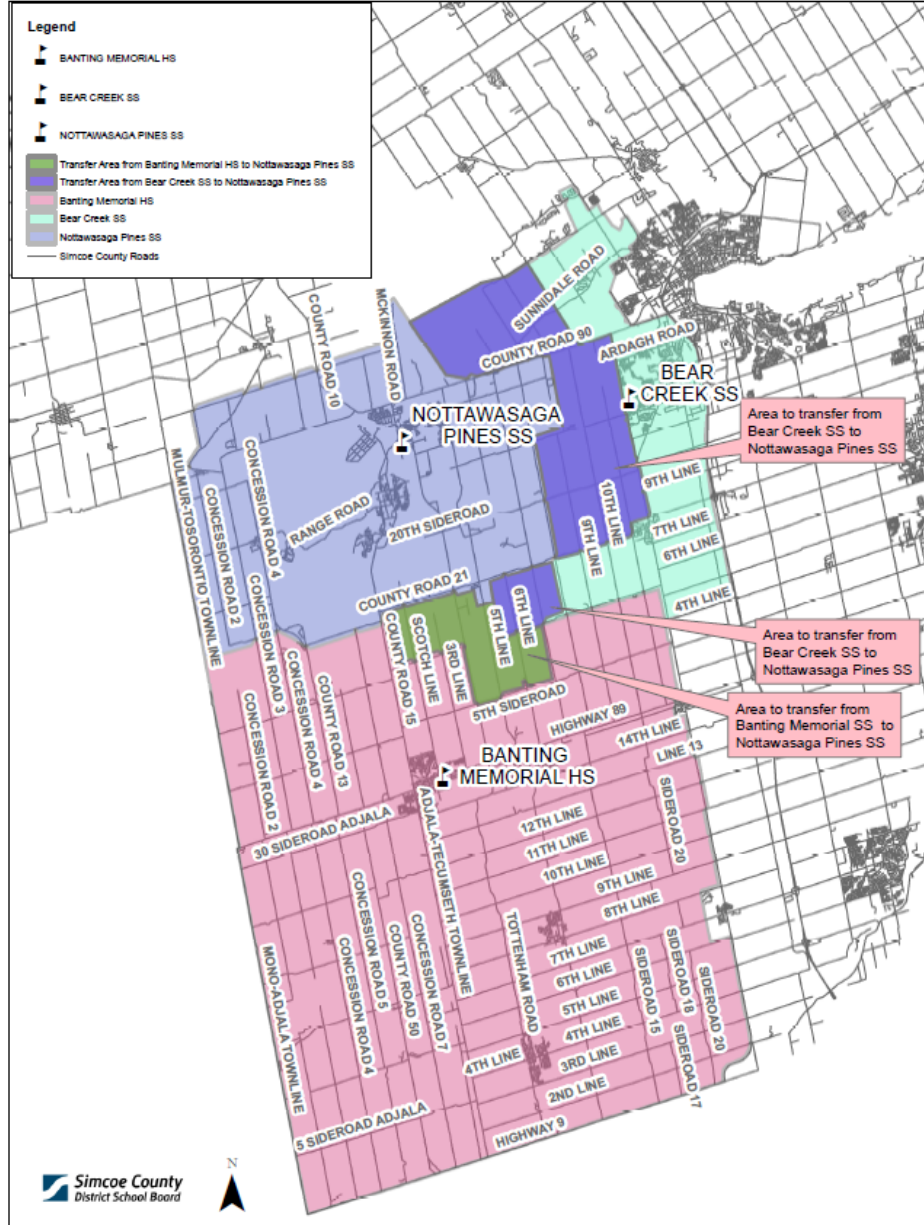
- transfer of approximately **five students** from Banting Memorial High School to Nottawasaga Pines Secondary School
- transfer of approximately **six students** from Bear Creek Secondary School to Nottawasaga Pines Secondary School
- approximately **11 students** from Grades 9 to 12 realigned to Nottawasaga Pines Secondary School over a four-year period

The proposed changes would go into effect in September 2024. Students within the area being proposed to attend Baxter Central Public School will transition into Nottawasaga Pines Secondary School as they reach secondary school (current Grade 6 students would attend Nottawasaga Pines Secondary School).

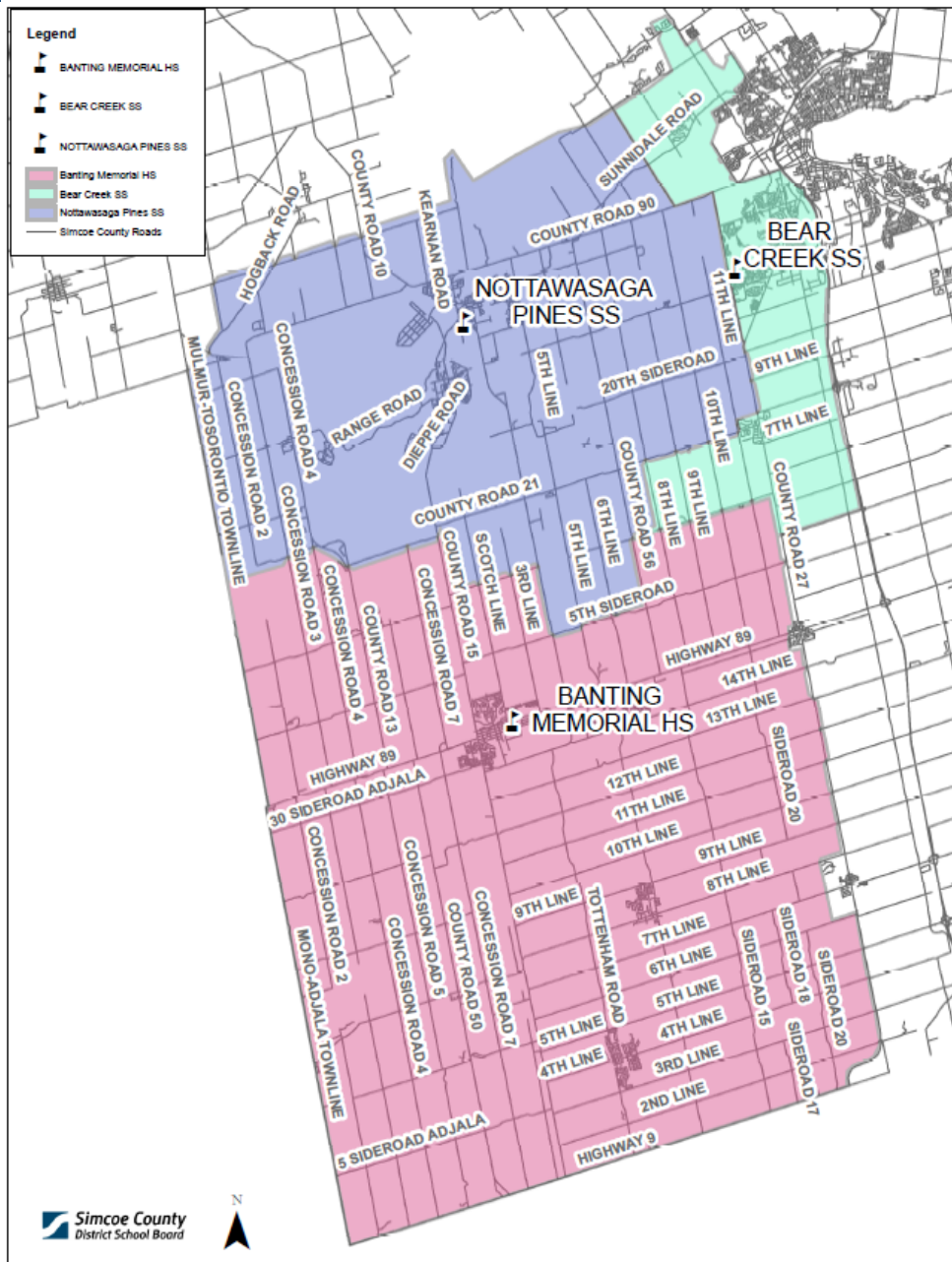
Current secondary attendance areas



Secondary attendance area transfers



Proposed secondary attendance areas



Transition strategy

Principals at Baxter Central Public School and Portage View Public School will ensure that transition of students is well planned, and that students and staff are supported.

Elementary attendance boundary changes will be implemented in September 2023, and current Grade 6 students (who will be in Grade 7 in September 2022) will have the choice to transfer or remain in their current school to graduate.

Secondary attendance boundary changes will be implemented in September 2024, and current Grade 6 students (who will be in Grade 8 in September 2023) will feed into Nottawasaga Pines Secondary School upon elementary school graduation in June 2024.

Questions and answers

When will the boundary change occur?

New attendance boundaries will take effect in September 2023 for elementary schools, and in September 2024 for secondary schools.

What are the policies for children entering Grade 8 the year of the move? Do they have to go to Baxter Central Public School?

No, board practice is to permit all Grade 8 students to decide if they want to go to the new school or remain at their current school. Grade 8 students wishing to stay at their current school will continue to have busing, if eligible for transportation.

What are the policies for children currently attending Banting Memorial High School or Bear Creek Secondary School? Do they have to go to Nottawasaga Pines Secondary School?

The recommendation being considered does not affect existing Banting Memorial High School or Bear Creek Secondary School students.

What type of transitions are put into place?

As we get closer to the date, the local school principals will work on exciting events to ensure students from each of the schools meet.

Questions and answers

Will there be a before and after school program at Baxter Central Public School?

Yes, York Professional Care and Education is operating a before and after school program.

What are the bell times for Baxter Central Public School?

The bell times are 9:20 a.m. and 3:40 p.m.

What are the bell times for Nottawasaga Pines Secondary School?

The bell times are 8:05 a.m. and 2:20 p.m.

Will transportation service be provided?

The Grade 8 students wishing to stay will continue to have transportation to Portage View Public School. Current secondary students at Banting Memorial High School or Bear Creek Secondary School will continue to have transportation. The Simcoe County Student Transportation Consortium (SCSTC) will provide bus stop locations and pick-up times upon implementation of the attendance boundaries.

Next steps and timelines

We value and encourage your input on the proposed plan.

The ThoughtExchange® will be open for feedback from April 4 to 15. After the closure of the ThoughtExchange®, the data collected will be evaluated and used to modify the proposed attendance and program review areas. A report will be provided to the SCDSB's Business and Facilities Standing Committee in June 2022.

Implementation of the boundaries will occur September 2023 for elementary schools and September 2024 for secondary schools.

Questions?

- For questions about ThoughtExchange®, contact research@scdsb.on.ca
- For clarification on details related to the AAR, contact planning_BaxterCentral@scdsb.on.ca